

Anatomy: **Knees - Popliteal Arteries** - Exa ms

MSK- Popliteal Entrap-Angio

Coil: **TORSO (Ingenia or Achieva Magnet)**

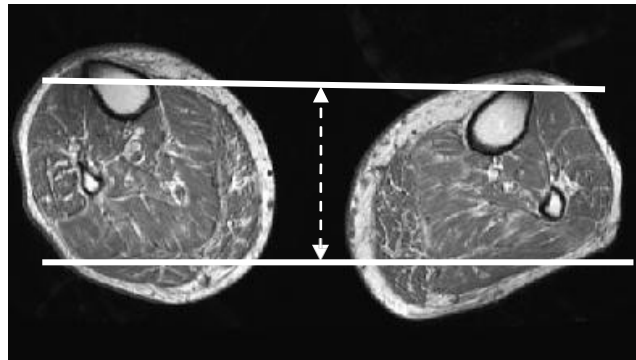
SEQUENCE - BASICS																	
PLANE	SEQ	Slice / Gap (mm)	Misc	Pixel size (mm)	MTX	FOV (cm)	% RFOV	Scan%	Nex Avg Acq	TR	TE	FA/TI	NS	ETL Turbo Factor	Phase Direct	Scan TIME (min)	Pixel Shift / BW-kHz
ROUTINE																	
Ax	T1	4/0.4	2cm above Patella thru Tib metaphysis	0.7	400	320	75										
Ax	T2 Dixon																
Ax	2D TOF	3/0	ECG-gate (PPU) ½ Dose	0.8	400	320	65										
Cor	4D-TRAK	2.4/ -1.2	12 phases; start scan 10 secs s/p	1.0	400	320	100										
	CHANGE		POSITION														
Cor	4D-TRAK	2.4/-1.2	½ Dose Repeat Sequence	1.0	400	320	100										
OPTIONAL																	

Misc - Instructions:

1. Initial Position = FOOT in Plantar Flexion (45-60degrees)
2. 2nd Position = FOOT in neutral (anatomic)position
3. Coronal 4D-TRAK covers from Mid-Tibial plateau thru ALL popliteal fossa and posterior muscle



Axial Coverage Bilateral



Coronal Coverage MR-Angio



Axial Coverage

